

Bachelor of Science (B.Sc.) Semester—V (C.B.S.) Examination
COMPUTER SCIENCE
Paper—2
(Database Management System)

Time : Three Hours]

[Maximum Marks : 50

- N.B. :—** (1) **ALL** questions are compulsory and carry equal marks.
 (2) Draw neat and labelled diagram wherever necessary.

EITHER

1. (A) What are the different problems in traditional file processing system ? 5
 (B) Explain the Network data model with suitable example. 5

OR

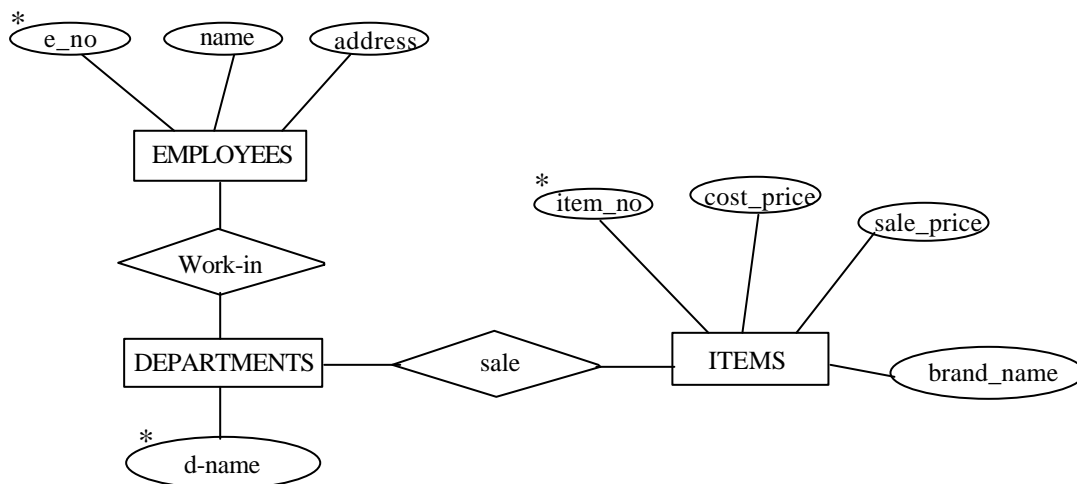
- (C) Explain the different components of database management system. 5
 (D) Explain the three level architecture of DBMS. 5

EITHER

2. (A) Explain Data mappings. 5
 (B) Draw an E-R diagram for Hospital System. 5

OR

- (C) Give the Table representation for following E-R diagram.



- (D) Explain Aggregation with suitable example. 5

EITHER

3. (A) Explain the Division operation with suitable example. 5

- (B) Consider the following relations

Depositor (Cust_name, acct_no)

Borrower (Cust_name, Loan_no)

Answer the following query in relational algebra : Find the names of all bank customers who have either an account or a loan or both. 5

OR

- (C) Explain the Cartesian product operation with suitable example. 5

- (D) Consider the following relations :

Borrower (Cust_name, Loan_no)

Loan (Branch_name, Loan_no, Amount)

Answer the following query in relational algebra. Find the names of all customers who have a loan at Nagpur Branch. 5

EITHER

4. (A) Identify the functional dependencies in the following table :—

| J | K | L |
|---|---|---|
| x | 1 | 2 |
| x | 1 | 3 |
| y | 1 | 4 |
| y | 1 | 3 |
| z | 2 | 5 |
| P | 4 | 7 |

- (B) Explain with example Second Normal Form (2NF). 5

OR

- (C) Explain BCNF with suitable example. 5

- (D) Explain the multivalued dependency. 5

5. (A) Explain data migration. 2½

- (B) Explain the select operation. 2½

- (C) Explain the primary key. 2½

- (D) What is Normalization ? 2½